

CATALOGO ABBINAMENTI
SCHEDA TECNICA



A F F R E S C H I

M A R I N E R

AFFRESCHI

GRES PORCELLANATO RETTIFICATO
PORCELAIN STONEWARE RECTIFIED

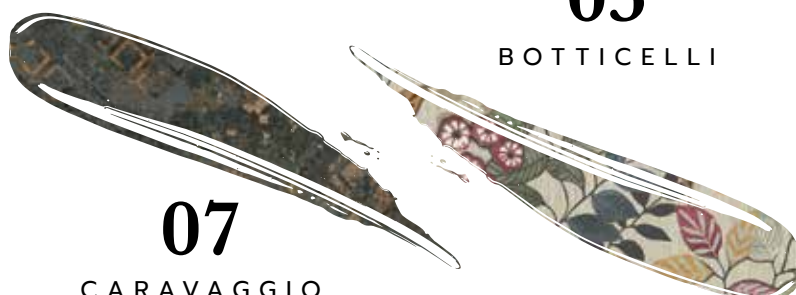


03

ANDY WARHOL

05

BOTTICELLI

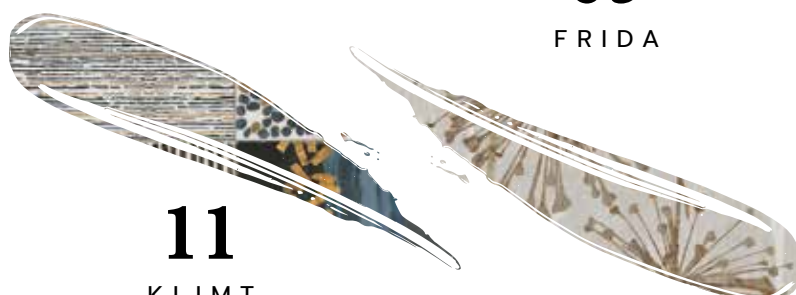


07

CARAVAGGIO

09

FRIDA



11

KLIMT

13

MONET



15

MORRIS

17

RENOIR

60x120 cm \approx 9mm

24"x48" \approx 3/8"

ANDY WARHOL



1006007

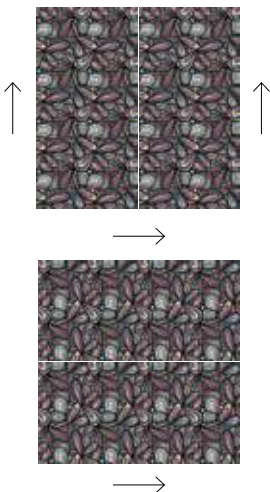
Andy Warhol Rettificato
60x120 24"x48"



VERSO DI POSA
DIRECTION OF INSTALLATION

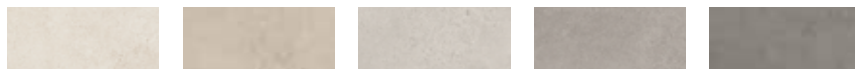


Posare i pezzi con la grafica nella stessa direzione, in entrambi i versi di posa.
Lay the pieces with the graphics in the same direction, in both directions of installation..



PAVIMENTI ABBINATI MATCHING FLOOR TILES

ABSOLUTE 60x120 24"x48" 80x80 32"x32" 40x80 16"x32" 60x60 24"x24" 30x60 12"x24"



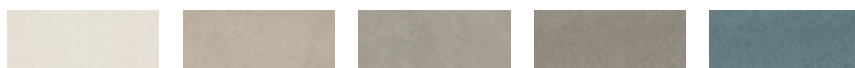
Cement White Cement Ivory Cement Ice Cement Grey Cement Smoke

BOSTON 60x120 24"x48" 80x80 32"x32" 40x80 16"x32" 60x60 24"x24" 30x60 12"x24"



White Mud Grey Ash

COOL 120x120 48"x48" 60x120 24"x48" 60x60 24"x24" 30x60 12"x24"



Ghost Almond Steel Shadow Ocean

ABSOLUTE 20x120 8"x48"



Wood White Wood Ivory Wood Ice Wood Grey Wood Smoke

PLANET 30x120 12"x48" 20x120 8"x48"



Olmo Rovere Noce Cenere

EFFETTO CEMENTO - PIETRA / CONCRETE - STONE LOOK

EFFETTO LEGNO / WOOD LOOK

ANDY WARHOL

POSA VERTICALE VERTICAL INSTALLATION



POSA ORIZZONTALE HORIZONTAL INSTALLATION



BOTTICELLI



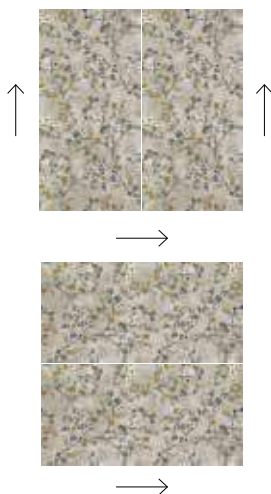
1006004

Botticelli Rettificato
60x120 24"x48"

VERSO DI POSA
DIRECTION OF INSTALLATION



!
Posare i pezzi con la grafica nella stessa direzione, in entrambi i versi di posa.
Lay the pieces with the graphics in the same direction, in both directions of installation.



PAVIMENTI ABBINATI MATCHING FLOOR TILES

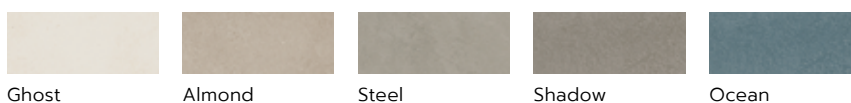
ABSOLUTE 60x120 24"x48" 80x80 32"x32" 40x80 16"x32" 60x60 24"x24" 30x60 12"x24"



BOSTON 60x120 24"x48" 80x80 32"x32" 40x80 16"x32" 60x60 24"x24" 30x60 12"x24"



COOL 120x120 48"x48" 60x120 24"x48" 60x60 24"x24" 30x60 12"x24"



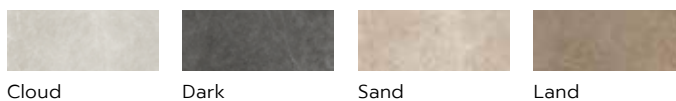
SHELLSTONE 60x120 24"x48" 60x60 24"x24" 30x60 12"x24"



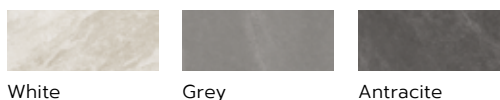
THEATRO 60x120 24"x48" 80x80 32"x32" 40x80 16"x32" 60x60 24"x24" 30x60 12"x24"



TIME 60x120 24"x48" 80x80 32"x32" 40x80 16"x32" 60x60 24"x24" 30x60 12"x24"



WALES 60x120 24"x48" 60x60 24"x24" 30x60 12"x24"



ABSOLUTE 20x120 8"x48"



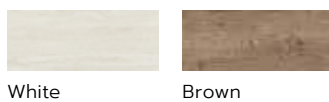
AXIS 30x120 12"x48" 20x120 8"x48" 15x60 6"x24"



PLANET 30x120 12"x48" 20x120 8"x48"



TONGASS 20x120 8"x48"



BOTTICELLI

POSA VERTICALE VERTICAL INSTALLATION



POSA ORIZZONTALE HORIZONTAL INSTALLATION



CARAVAGGIO



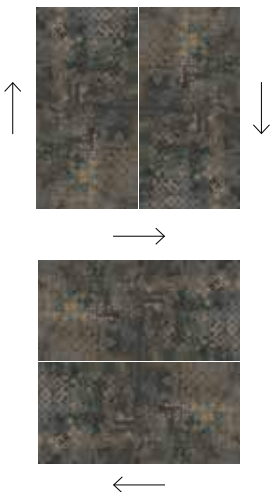
1006005

Caravaggio Rettificato
60x120 24"x48"

VERSO DI POSA
DIRECTION OF INSTALLATION



Il prodotto può essere posato in tutti i versi e random.
The product can be installed in all directions and randomly.



PAVIMENTI ABBINATI MATCHING FLOOR TILES

ABSOLUTE 60x120 24"x48" 80x80 32"x32" 40x80 16"x32" 60x60 24"x24" 30x60 12"x24"



Cement Smoke

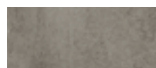


Elements Corten



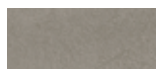
Elements Petrol

BOSTON 60x120 24"x48" 80x80 32"x32" 40x80 16"x32" 60x60 24"x24" 30x60 12"x24"



Ash

COOL 120x120 48"x48" 60x120 24"x48" 60x60 24"x24" 30x60 12"x24"



Shadow

TIME 60x120 24"x48" 80x80 32"x32" 40x80 16"x32" 60x60 24"x24" 30x60 12"x24"



Land

WALES 60x120 24"x48" 60x60 24"x24" 30x60 12"x24"



Antracite

ABSOLUTE 20x120 8"x48"



Wood Smoke

AXIS 30x120 12"x48" 20x120 8"x48" 15x60 6"x24"



Nut



Oak

PLANET 30x120 12"x48" 20x120 8"x48"



Olmo



Noce

TONGASS 20x120 8"x48"



Natural



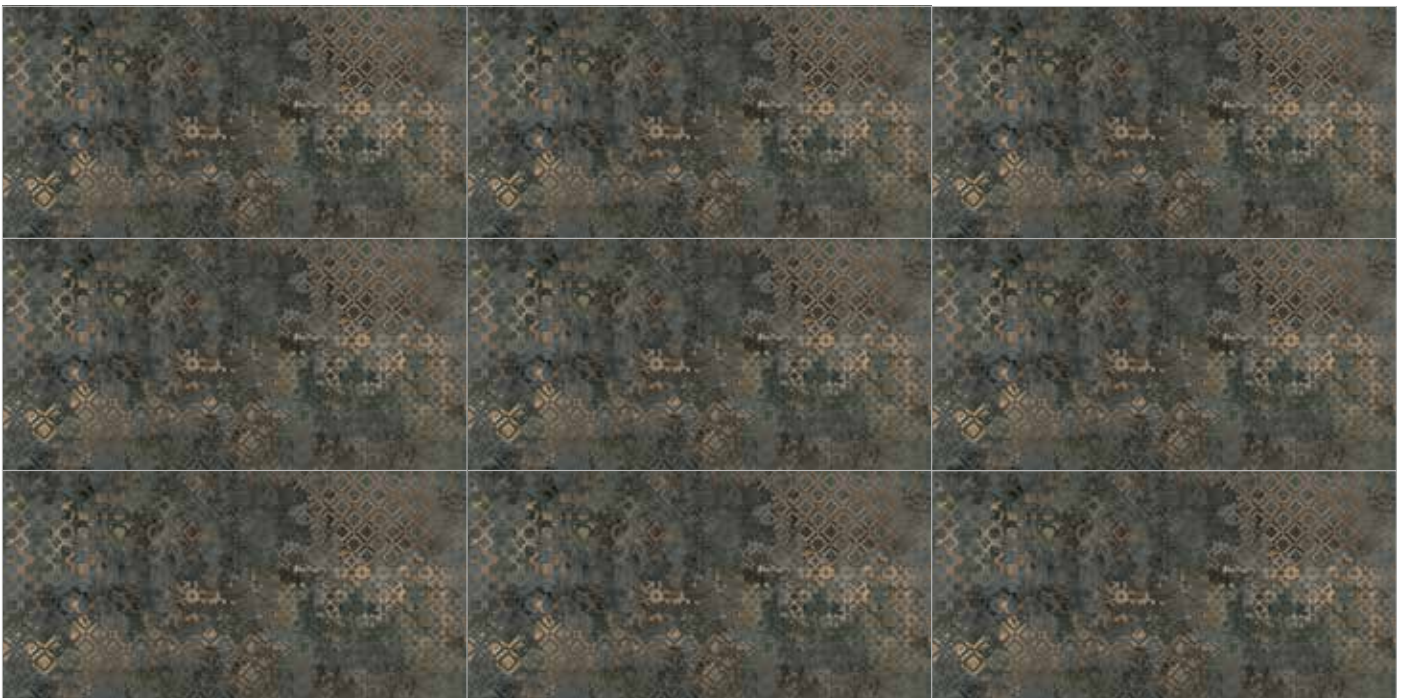
Brown

CARAVAGGIO

POSA VERTICALE VERTICAL INSTALLATION



POSA ORIZZONTALE HORIZONTAL INSTALLATION



FRIDA



1006008

Frida Rettificato
60x120 24"x48"



VERSO DI POSA
DIRECTION OF INSTALLATION



Posare i pezzi con la grafica nella stessa direzione, in entrambi i versi di posa.
Lay the pieces with the graphics in the same direction, in both directions of installation.



PAVIMENTI ABBINATI MATCHING FLOOR TILES

ABSOLUTE 60x120 24"x48" 80x80 32"x32" 40x80 16"x32" 60x60 24"x24" 30x60 12"x24"

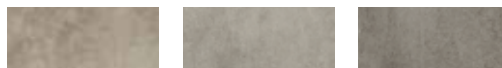


Cement White Cement Ivory Cement Taupe Cement Smoke



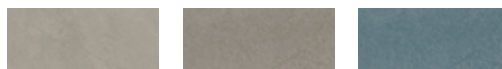
Elements Petrol

BOSTON 60x120 24"x48" 80x80 32"x32" 40x80 16"x32" 60x60 24"x24" 30x60 12"x24"



Mud Grey Ash

COOL 120x120 48"x48" 60x120 24"x48" 60x60 24"x24" 30x60 12"x24"



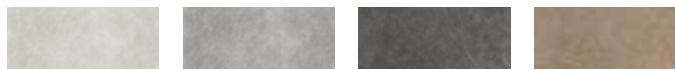
Steel Shadow Ocean

THEATRO 60x120 24"x48" 80x80 32"x32" 40x80 16"x32" 60x60 24"x24" 30x60 12"x24"



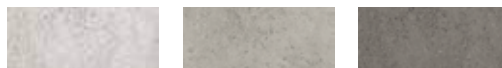
White Bone

TIME 60x120 24"x48" 80x80 32"x32" 40x80 16"x32" 60x60 24"x24" 30x60 12"x24"



Cloud Fog Dark Land

SHELLSTONE 60x120 24"x48" 60x60 24"x24" 30x60 12"x24"



White Grey Dark

ABSOLUTE 20x120 8"x48"



Wood White Wood Ivory Wood Taupe Wood Smoke

AXIS 30x120 12"x48" 20x120 8"x48" 15x60 6"x24"



Nut Oak

PLANET 30x120 12"x48" 20x120 8"x48"



Olmo Noce

TONGASS 20x120 8"x48"



Blond Brown

FRIDA

POSA VERTICALE VERTICAL INSTALLATION



POSA ORIZZONTALE HORIZONTAL INSTALLATION



KLIMT



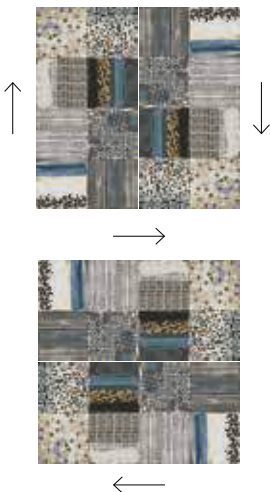
1006001

Klimt Rettificato
60x120 24"x48"

VERSO DI POSA
DIRECTION OF INSTALLATION



Il prodotto può essere posato in tutti i versi e random.
The product can be installed in all directions and randomly.



PAVIMENTI ABBINATI MATCHING FLOOR TILES

ABSOLUTE 60x120 24"x48" 80x80 32"x32" 40x80 16"x32" 60x60 24"x24" 30x60 12"x24"



Cement White Cement Ivory Cement Grey



Elements Corten

BOSTON 60x120 24"x48" 80x80 32"x32" 40x80 16"x32" 60x60 24"x24" 30x60 12"x24"



White Ash

COOL 120x120 48"x48" 60x120 24"x48" 60x60 24"x24" 30x60 12"x24"



Ghost Almond Steel Ocean

SHELLSTONE 60x120 24"x48" 60x60 24"x24" 30x60 12"x24"



Amber Dark

THEATRO 60x120 24"x48" 80x80 32"x32" 40x80 16"x32" 60x60 24"x24" 30x60 12"x24"



White Bone Graphite Anthracite

TIME 60x120 24"x48" 80x80 32"x32" 40x80 16"x32" 60x60 24"x24" 30x60 12"x24"



Cloud Dark Sand

ABSOLUTE 20x120 8"x48"



Wood White Wood Ivory Wood Grey

AXIS 30x120 12"x48" 20x120 8"x48" 15x60 6"x24"



Birch Maple Nut Oak

PLANET 30x120 12"x48" 20x120 8"x48"



Olmo Rovere Noce Cenere

TONGASS 20x120 8"x48"



White Blond Natural Brown

EFFETTO CEMENTO - PIETRA / CONCRETE - STONE LOOK

EFFETTO LEGNO / WOOD LOOK

KLIMT

POSA VERTICALE VERTICAL INSTALLATION



POSA ORIZZONTALE HORIZONTAL INSTALLATION



MONET



1006003

Monet Rettificato
60x120 24"x48"

VERSO DI POSA
DIRECTION OF INSTALLATION



!
Posare i pezzi in verticale con la grafica nella stessa direzione.
Lay the tiles vertically with the graphics in the same direction.



PAVIMENTI ABBINATI MATCHING FLOOR TILES

ABSOLUTE 60x120 24"x48" 80x80 32"x32" 40x80 16"x32" 60x60 24"x24" 30x60 12"x24"



Cement Ivory Cement Taupe Cement Grey Cement Smoke



Elements Corten

BOSTON 60x120 24"x48" 80x80 32"x32" 40x80 16"x32" 60x60 24"x24" 30x60 12"x24"



White Mud Grey Ash

COOL 120x120 48"x48" 60x120 24"x48" 60x60 24"x24" 30x60 12"x24"



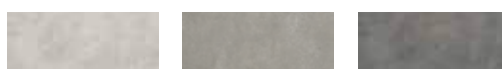
Steel Shadow

SHELLSTONE 60x120 24"x48" 60x60 24"x24" 30x60 12"x24"



Amber Dark

THEATRO 60x120 24"x48" 80x80 32"x32" 40x80 16"x32" 60x60 24"x24" 30x60 12"x24"



White Graphite Anthracite

TIME 60x120 24"x48" 80x80 32"x32" 40x80 16"x32" 60x60 24"x24" 30x60 12"x24"



Fog Land

WALES 60x120 24"x48" 60x60 24"x24" 30x60 12"x24"



Grey Antracite

ABSOLUTE 20x120 8"x48"



Wood White Wood Ivory Wood Grey Wood Smoke

AXIS 30x120 12"x48" 20x120 8"x48" 15x60 6"x24"



Nut Oak

PLANET 30x120 12"x48" 20x120 8"x48"



Olmo Rovere Noce

TONGASS 20x120 8"x48"



Natural Brown

EFFETTO CEMENTO - PIETRA / CONCRETE - STONE LOOK

EFFETTO LEGNO / WOOD LOOK

MONET

POSA VERTICALE VERTICAL INSTALLATION



MORRIS



1006006

Morris Rettificato
60x120 24"x48"

VERSO DI POSA
DIRECTION OF INSTALLATION



!
Il prodotto può essere posato
in tutti i versi e random.
The product can be installed
in all directions and randomly.

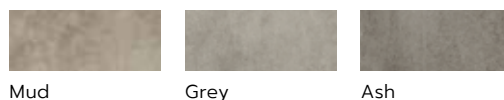


PAVIMENTI ABBINATI MATCHING FLOOR TILES

ABSOLUTE 60x120 24"x48" 80x80 32"x32" 40x80 16"x32" 60x60 24"x24" 30x60 12"x24"



BOSTON 60x120 24"x48" 80x80 32"x32" 40x80 16"x32" 60x60 24"x24" 30x60 12"x24"



COOL 120x120 48"x48" 60x120 24"x48" 60x60 24"x24" 30x60 12"x24"



THEATRO 60x120 24"x48" 80x80 32"x32" 40x80 16"x32" 60x60 24"x24" 30x60 12"x24"



TIME 60x120 24"x48" 80x80 32"x32" 40x80 16"x32" 60x60 24"x24" 30x60 12"x24"



WALES 60x120 24"x48" 60x60 24"x24" 30x60 12"x24"



ABSOLUTE 20x120 8"x48"



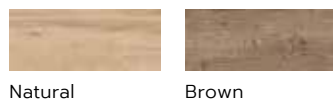
AXIS 30x120 12"x48" 20x120 8"x48" 15x60 6"x24"



PLANET 30x120 12"x48" 20x120 8"x48"



TONGASS 20x120 8"x48"



EFFETTO CEMENTO - PIETRA / CONCRETE - STONE LOOK

EFFETTO LEGNO / WOOD LOOK

MORRIS

POSA VERTICALE VERTICAL INSTALLATION



POSA ORIZZONTALE HORIZONTAL INSTALLATION



RENOIR



1006002

Renoir Rettificato
60x120 24"x48"

VERSO DI POSA
DIRECTION OF INSTALLATION



!
Posare i pezzi in verticale con la grafica nella stessa direzione.
Lay the tiles vertically with the graphics in the same direction.



PAVIMENTI ABBINATI MATCHING FLOOR TILES

ABSOLUTE 60x120 24"x48" 80x80 32"x32" 40x80 16"x32" 60x60 24"x24" 30x60 12"x24"



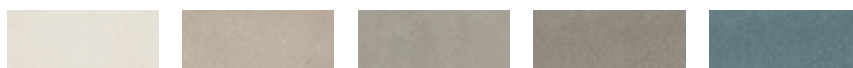
Cement White Cement Ivory Cement Taupe Cement Ice

BOSTON 60x120 24"x48" 80x80 32"x32" 40x80 16"x32" 60x60 24"x24" 30x60 12"x24"



White Mud Grey Ash

COOL 120x120 48"x48" 60x120 24"x48" 60x60 24"x24" 30x60 12"x24"



Ghost Almond Steel Shadow Ocean

SHELLSTONE 60x120 24"x48" 60x60 24"x24" 30x60 12"x24"



White Amber Grey

THEATRO 60x120 24"x48" 80x80 32"x32" 40x80 16"x32" 60x60 24"x24" 30x60 12"x24"



White Bone Graphite Anthracite

TIME 60x120 24"x48" 80x80 32"x32" 40x80 16"x32" 60x60 24"x24" 30x60 12"x24"



Cloud Fog Sand Land

WALES 60x120 24"x48" 60x60 24"x24" 30x60 12"x24"



White Beige Antracite

ABSOLUTE 20x120 8"x48"



Wood White Wood Ivory Wood Taupe Wood Ice

AXIS 30x120 12"x48" 20x120 8"x48" 15x60 6"x24"



Birch Maple Nut Oak

PLANET 30x120 12"x48" 20x120 8"x48"



Cenere Olmo Rovere Noce

TONGASS 20x120 8"x48"



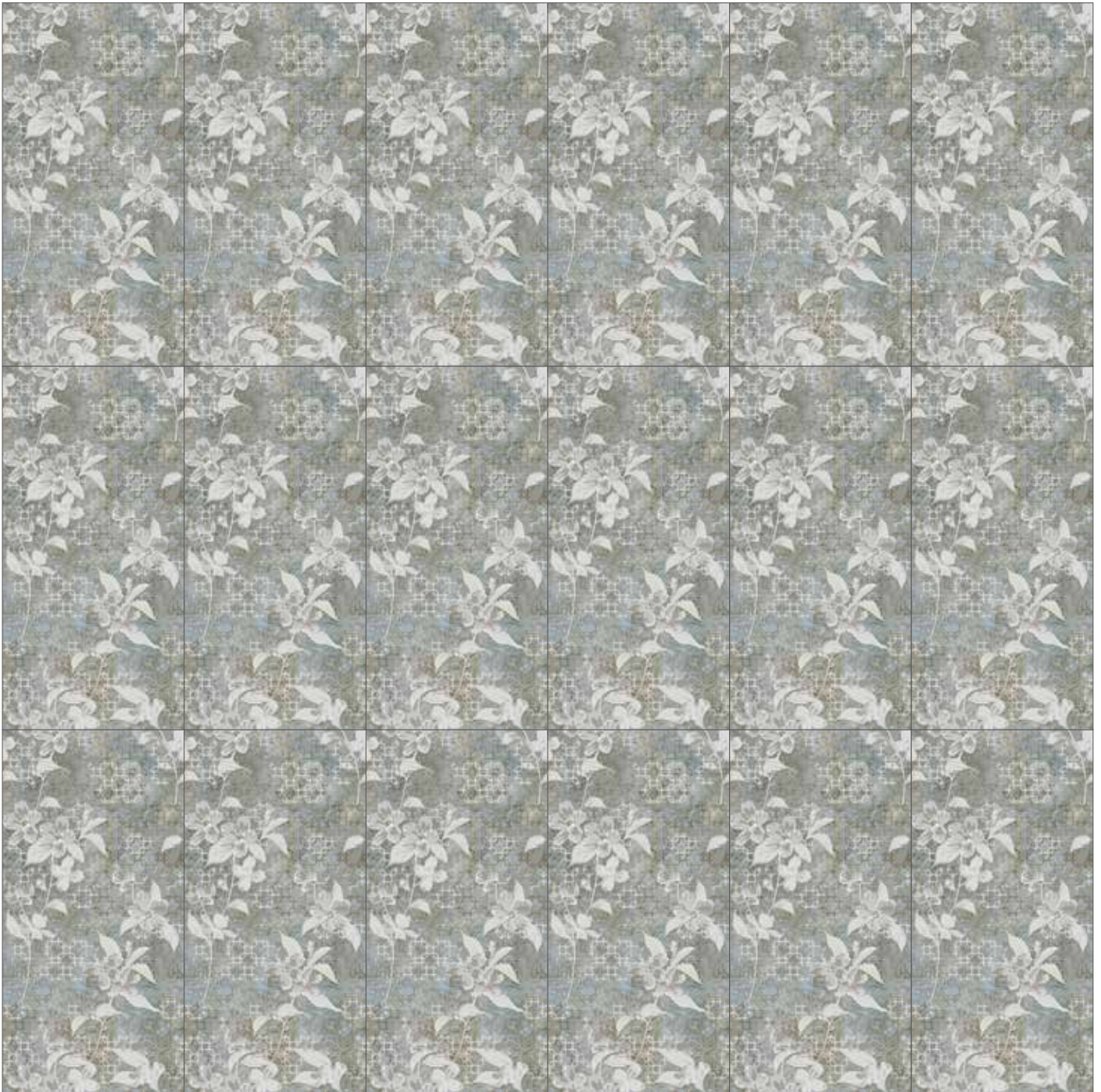
White Blond Natural Brown

EFFETTO CEMENTO - PIETRA / CONCRETE - STONE LOOK

EFFETTO LEGNO / WOOD LOOK

RENOIR

POSA VERTICALE VERTICAL INSTALLATION



CARATTERISTICHE TECNICHE TECHNICAL FEATURES

Norma di riferimento / Specification reference ISO 13006/EN14411 APPENDICE G Bla GL		Norma Norm	A F F R E S C H I
	LUNGHEZZA E LARGHEZZA / LENGTH AND WIDTH	UNI EN ISO 10545-2	CONFORME / IN ACCORDANCE
	SPESSORE / THICKNESS		CONFORME / IN ACCORDANCE
	RETTILINEITÀ SPIGOLI / STRAIGHTNESS OF SIDES		CONFORME / IN ACCORDANCE
	ORTOGONALITÀ / RECTANGULARITY		CONFORME / IN ACCORDANCE
	PLANARITÀ / SURFACE FLATNESS		CONFORME / IN ACCORDANCE
ASPETTO / ASPECT		CONFORME / IN ACCORDANCE	
	ASSORBIMENTO D'ACQUA WATER ABSORPTION	UNI EN ISO 10545-3	≤ 0,5%
	RESISTENZA A FLESSIONE / FLEXURAL STRENGTH	UNI EN ISO 10545-4	≥ 35 N/mm ²
	MODULO DI ROTTURA / BREAKING STRENGTH		≥ 1300 N
	DETERMINAZIONE DELLA RESISTENZA ALL'URTO DETERMINATION OF IMPACT RESISTANCE	UNI EN ISO 10545-5	0,90
	RESISTENZA ALL'ABRAZIONE (METODO PEI) ABRASION RESISTANCE (PEI-METHOD)	UNI EN ISO 10545-7	PEI 3 RENOIR, MONET PEI 2 KLIMT, BOTTICELLI, CARAVAGGIO, MORRIS
	COEFFICIENTE DI DILATAZIONE TERMICA LINEARE THERMAL EXPANSION COEFFICIENT	UNI EN ISO 10545-8	(5,7÷5,9) X 10 ⁻⁶ /°C
	RESISTENZA AGLI SBALZI TERMICI THERMAL SHOCK RESISTANCE	UNI EN ISO 10545-9	N.A.
	DETERMINAZIONE DELLA DILATAZIONE DOVUTA ALL'UMIDITÀ DETERMINATION OF MOISTURE EXPANSION	UNI EN ISO 10545-10	0,0 mm/m
	DETERMINAZIONE DELLA RESISTENZA AL CAVILLO DETERMINATION OF CRAZING RESISTANCE	UNI EN ISO 10545-11	N.A.
	RESISTENZA AL GELO FROST RESISTANCE	UNI EN ISO 10545-12	N.A.
	RESISTENZA AGLI AGENTI CHIMICI RESISTANCE TO CHEMICALS	UNI EN ISO 10545-13	MIN. CLASS B LB HB
	RESISTENZA ALLE MACCHIE STAIN RESISTANCE	UNI EN ISO 10545-14	MINIMO CLASSE 3 MINIMUM CLASS 3
	RESISTENZA ALLO SCIVOLAMENTO SLIP RESISTANCE	DIN 51130	R9 KLIMT, RENOIR, MONET R10 BOTTICELLI, CARAVAGGIO, MORRIS
		DIN 51097	A KLIMT, RENOIR, MONET A+B BOTTICELLI, CARAVAGGIO, MORRIS
		C.o.F B.C.R./D.M. 236 14/6/89	>0,40
		D.C.o.F / ANSI A326.3	>0,42
	REAZIONE AL FUOCO REACTION TO FIRE	96/603/CE	A _{1FL} /A ₁
	GRADO DI VARIAZIONE CROMATICA AESTHETIC CLASSES	ANSI A137.1	-

